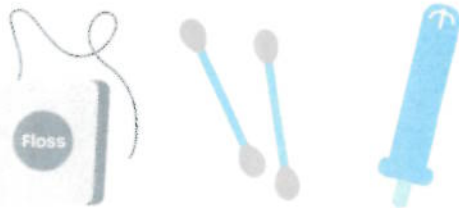
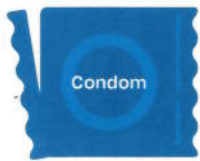


# DON'T FLUSH THAT!



## Trash does not belong in the toilet.

Protect our waterways, beaches and the environment. Never litter and don't use your toilet as a trash can. The following should never be flushed:

- Medicines and bandages
- Sharps, needles and lancets
- Cigarettes
- Contraceptives
- Feminine hygiene products
- Cotton swabs
- Wipes

Unused medicine and sharps such as needles and lancets can be dropped off at S.A.F.E. centers across the city.

For information please call LA Sanitation's 24 hour Customer Care Center at 1-800-773-2489 or visit [www.lacitysan.org](http://www.lacitysan.org)



@lacitysan  
#dontflushthat



# To protect our ocean, don't litter outside...

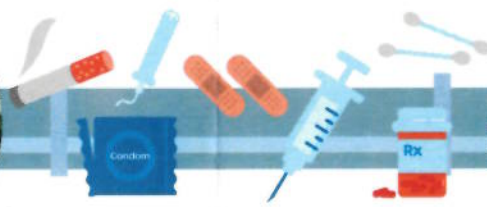


Litter collects in storm drains and enters the city's system

It arrives at the storm drain outflow, polluting the beach

The City's storm drain system conveys urban and stormwater runoff directly to the ocean. Litter in our streets can end up moving through the storm drain system bringing plastic pollution and toxins to the coast.

## ...or inside



Sewage goes from your home to a water reclamation plant

Travels through the sewer system

Arrives at water reclamation plant

The sewer system conveys wastewater to a plant where it is highly treated and discharged into the river or ocean. Flushing anything but human waste and toilet paper can cause blockages, back ups and sewer line breaks. When this happens untreated sewage can enter the storm drain system and impact our beaches.

To learn more about the water reclamation and storm drain systems and how they impact our ocean, please visit [healthebay.org/requestspeaker](http://healthebay.org/requestspeaker)

