

# IMPORTANT INFORMATION ABOUT PROPOSED INCREASED SEWER RATES

The City is proposing to resume Sewer Service Charge rate increases that were paused in 2020 because of the pandemic. This is necessary to protect Angelenos' public health and the environment. Please know that assistance will be available for households in need. Read on for more information below.

## ✓ Necessary Action Now

Steady increases in Sewer Service Charge rates were paused in 2020 because of the pandemic and following a 45-day public input period this coming summer, would resume in fall 2024 to continue to build infrastructure projects to protect public health and our environment which includes waterways, our beaches and the ocean.

## ✓ Protecting Public Health and the Environment

Your rate goes toward protecting Angelenos' health and the environment by making upgrades and repairs to LA's aging wastewater system and its reclamation plants. This is the system that safely removes wastewater from your homes, businesses, schools and community facilities, and transports it to where it is processed, cleaned, and repurposed at LA's four reclamation plants. Many pipelines need to be repaired or replaced and improvement projects for the sewers and treatment facilities are underway to continue making sure we have clean water and that we are safeguarding our environment, including our waterways, beaches and ocean.

## ✓ Assistance For Households in Need

We know that many households are still in need. There is financial assistance available for Angelenos. You and your household may be eligible for financial assistance to offset the impacts. The City currently offers financial assistance for the Sewer Service Charge to households in need through the EZ-SAVE Program. This assistance will continue for eligible households.

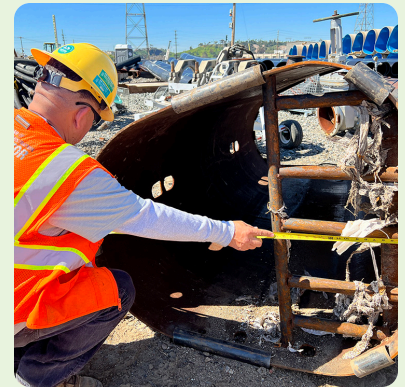
You will also be able to pay your bill monthly instead of bimonthly and this option is available to all ratepayers through the Level-Pay Program - there is no income eligibility requirement. To find out if you are eligible for the EZ-SAVE program or to change your billing schedule through the Level-Pay program, visit: <https://www.ladwp.com/financialassistance>

## ✓ More Information About Proposed Rates and Our Bill Calculator



Your future sewer bills depend on the adopted rates as well as how much water you use. You can use our bill calculator to estimate your future sewer bills based on the amount of water used shown on your last LADWP utility bill. Visit <https://www.lacitysan.org/rates> to find the bill calculator.

If you'd like to learn more, we encourage you to call **1-800-773-2489** or send an email to [sansscrates2024@lacity.org](mailto:sansscrates2024@lacity.org). Representatives are available to take your calls about proposed Sewer Service Charge rates weekdays between 7:30 a.m. and 5:30 p.m. Responses to emails will be attended to during business hours, and provided one business day after your email is received.



North Outfall Sewer Rehabilitation Project

## UPCOMING PROJECTS

In the next five years, the City will invest in hundreds of projects citywide, with anticipated costs exceeding \$3 billion.

Projects will be launched to build, enhance, or replace critical pumping plants that prevent sewage overflows.

Modernizing the North Outfall Sewer - the backbone of LA's 6,700-mile sewer system - will be completed after two decades of construction projects, ensuring its service for generations to come.

Water reclamation plants will prepare for the resiliency needs for the future of Los Angeles.

For more information, visit <https://www.lacitysan.org/rates>

